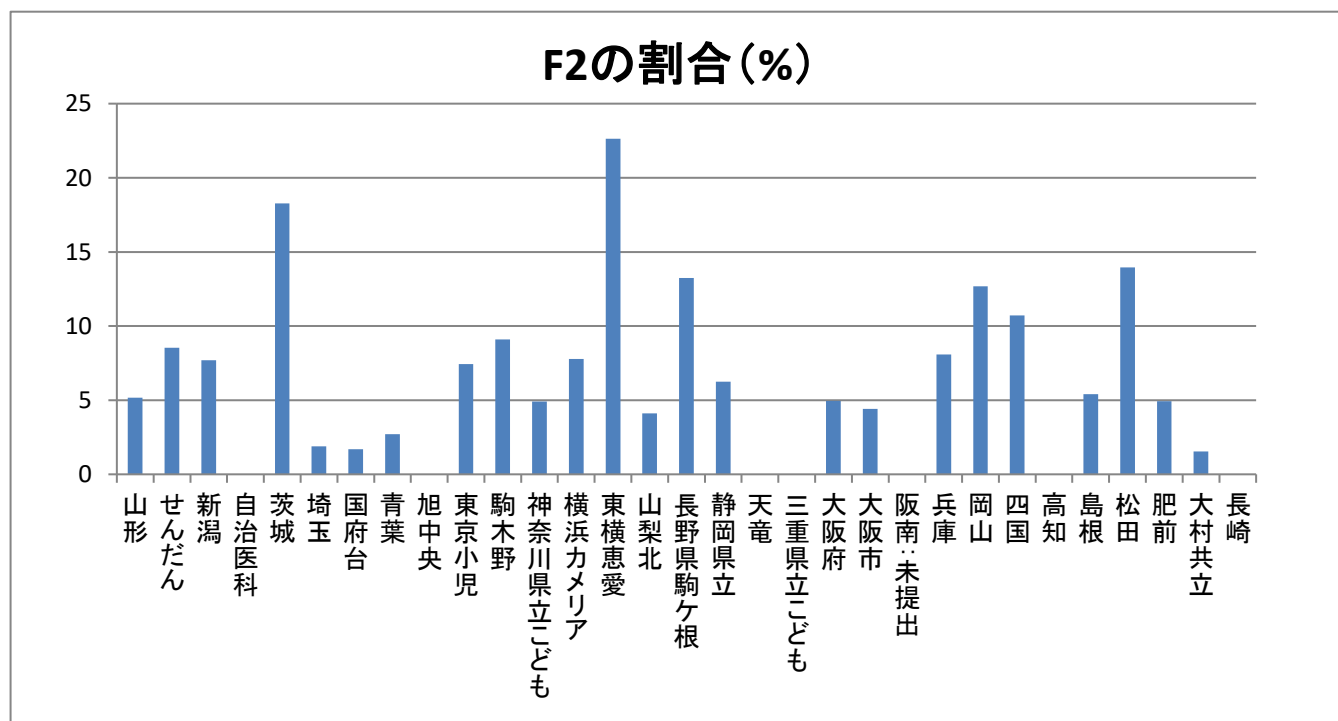
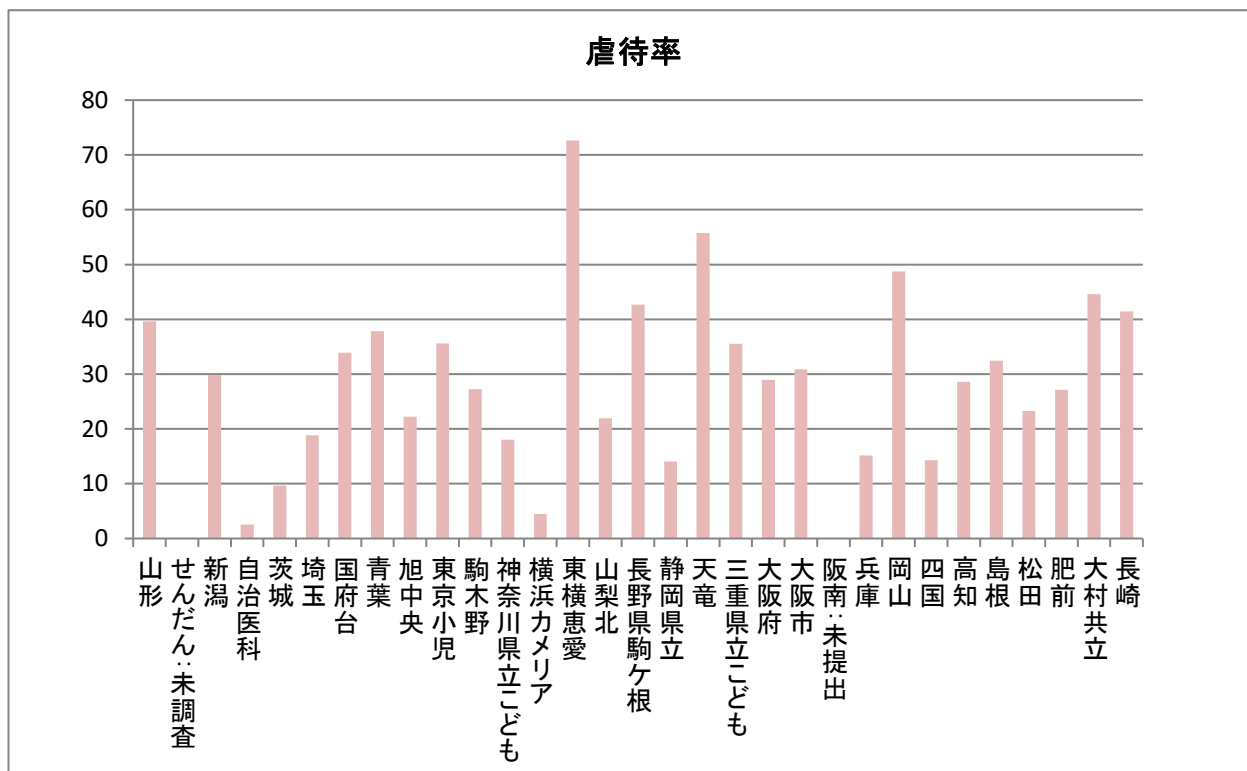
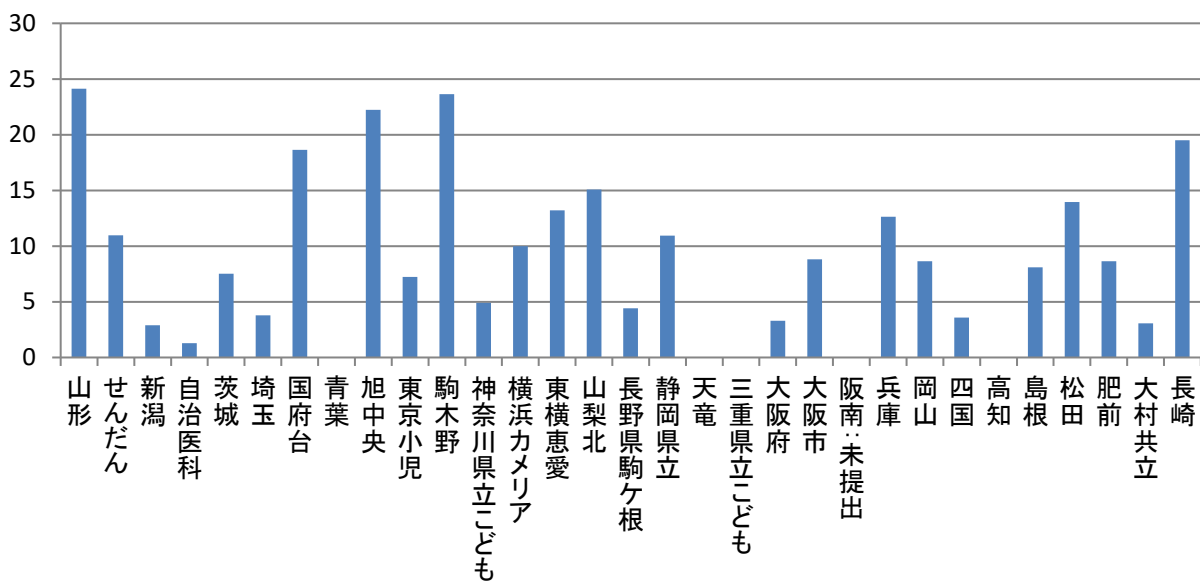


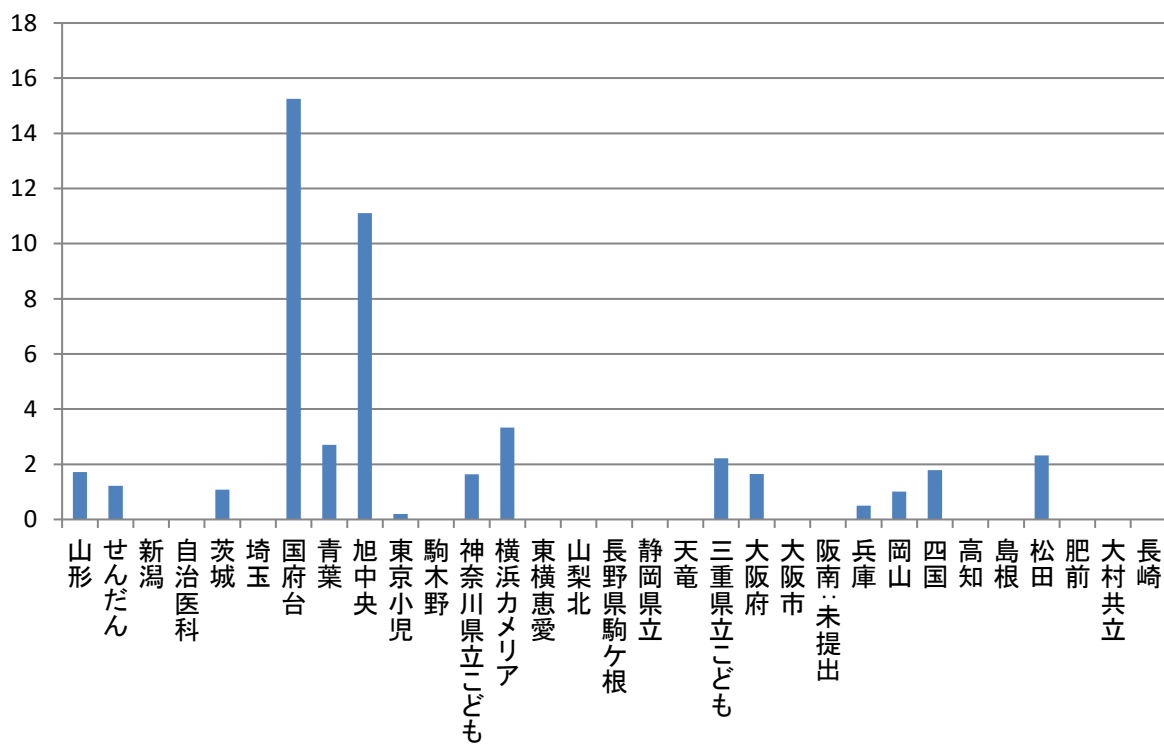
新規入院患者診断カテゴリー別統計 2017



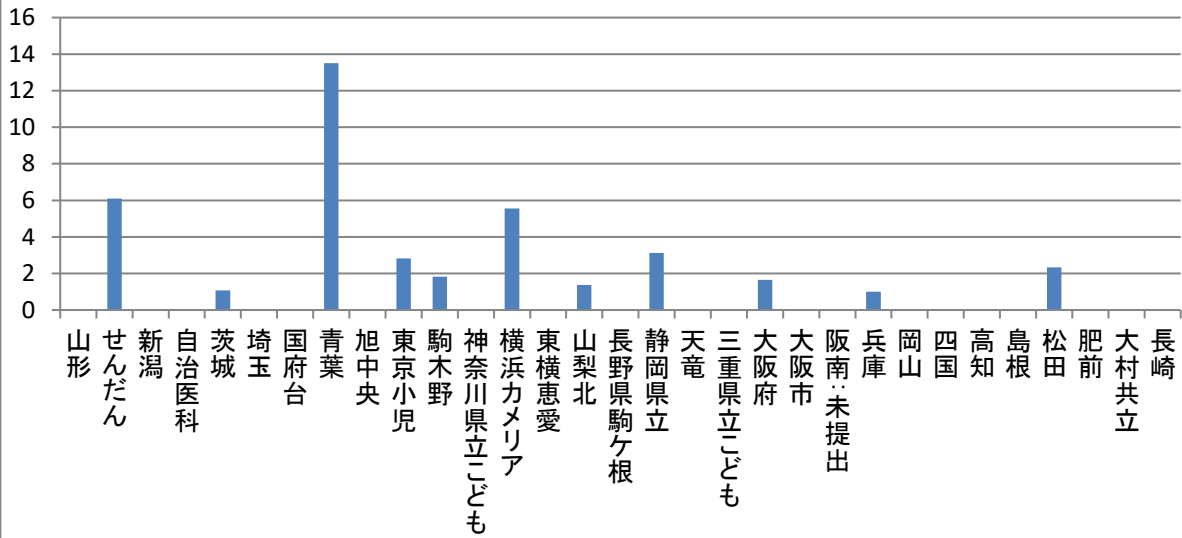
F3の割合 (%)



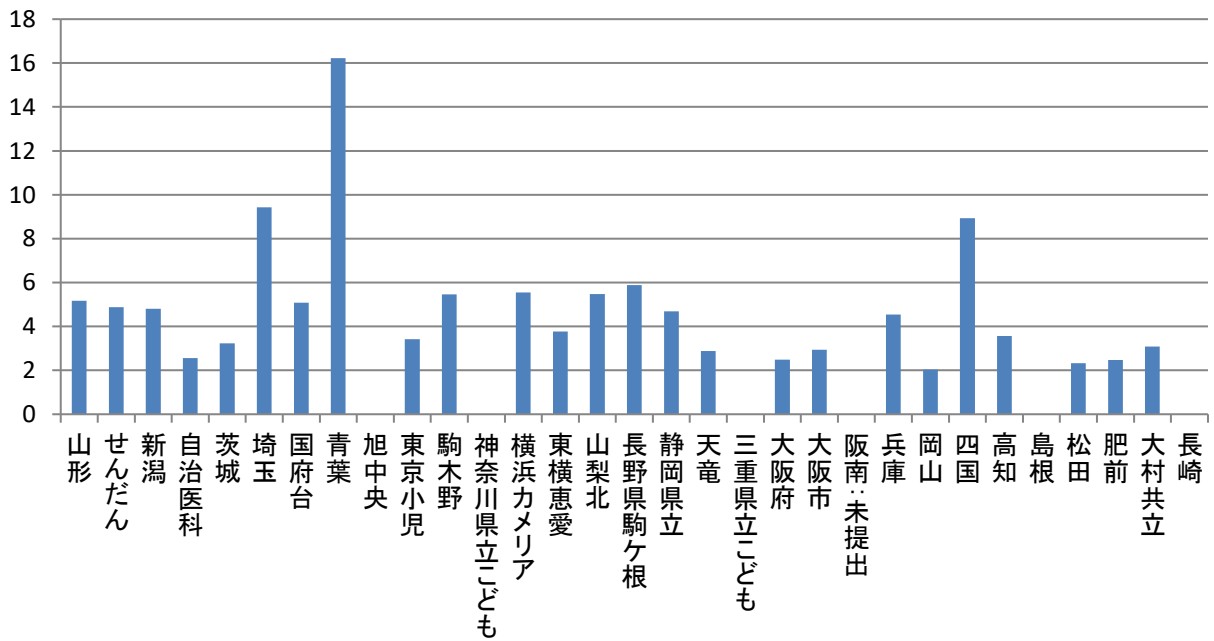
F40の割合 (%)



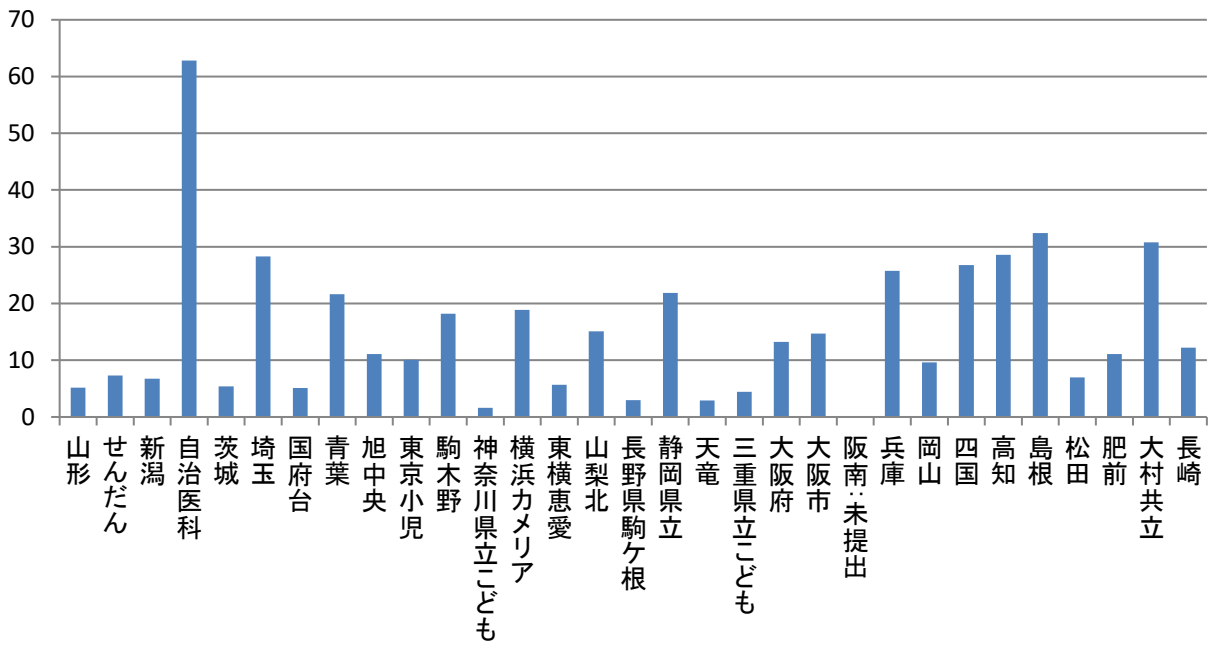
F41の割合 (%)



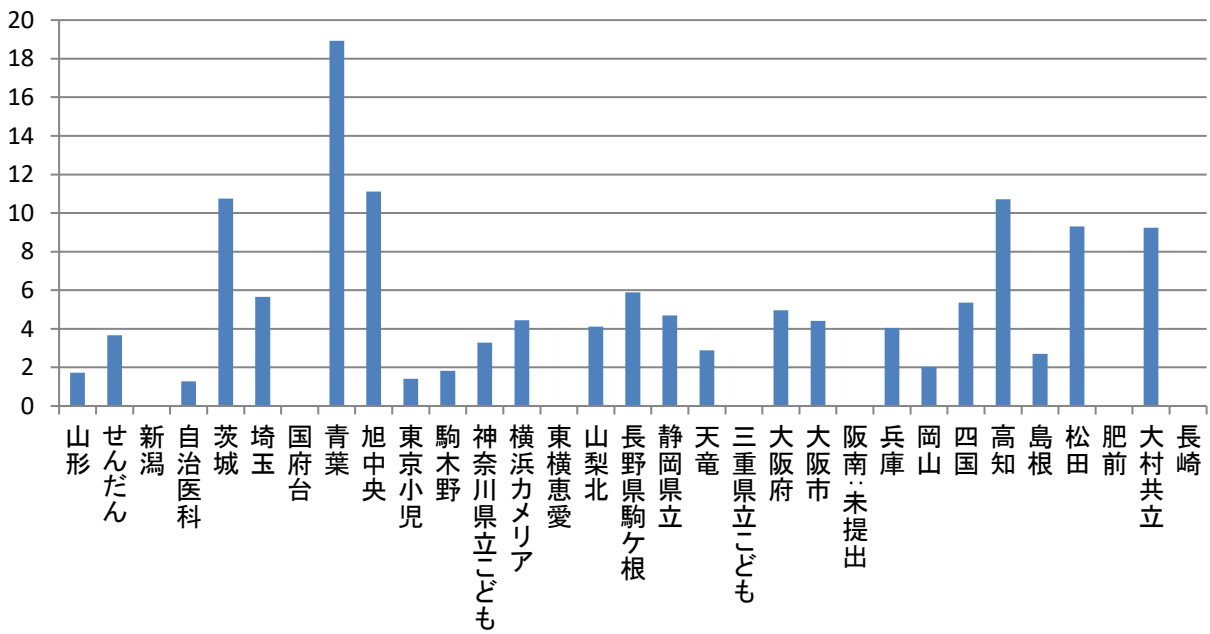
F42の割合 (%)



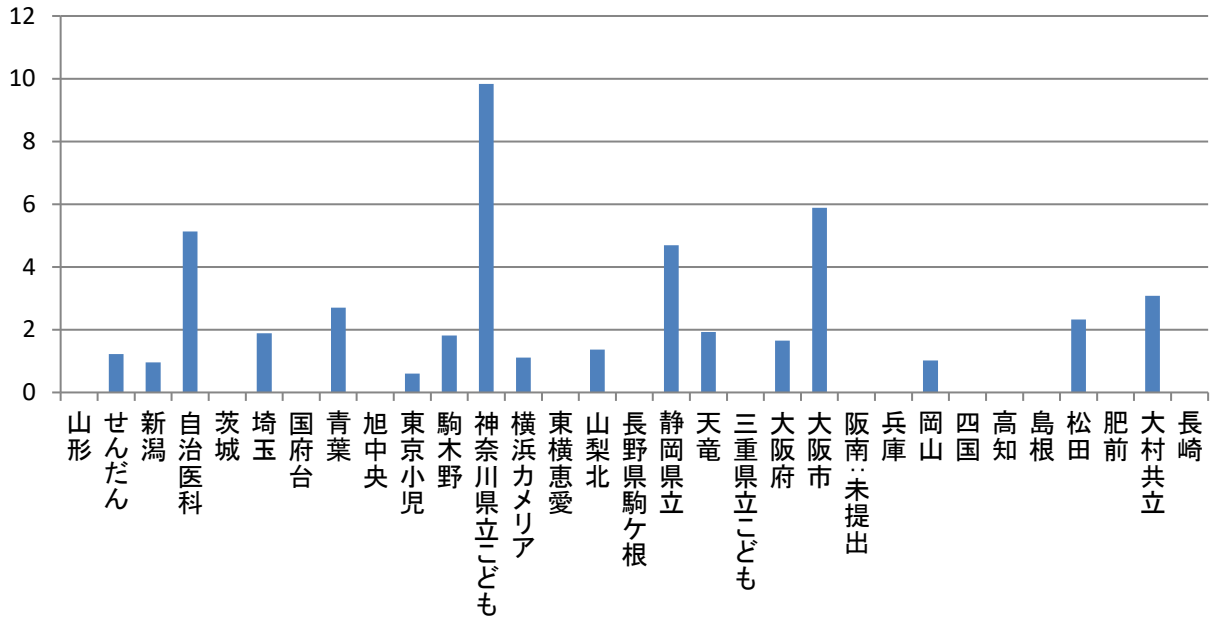
F43の割合 (%)



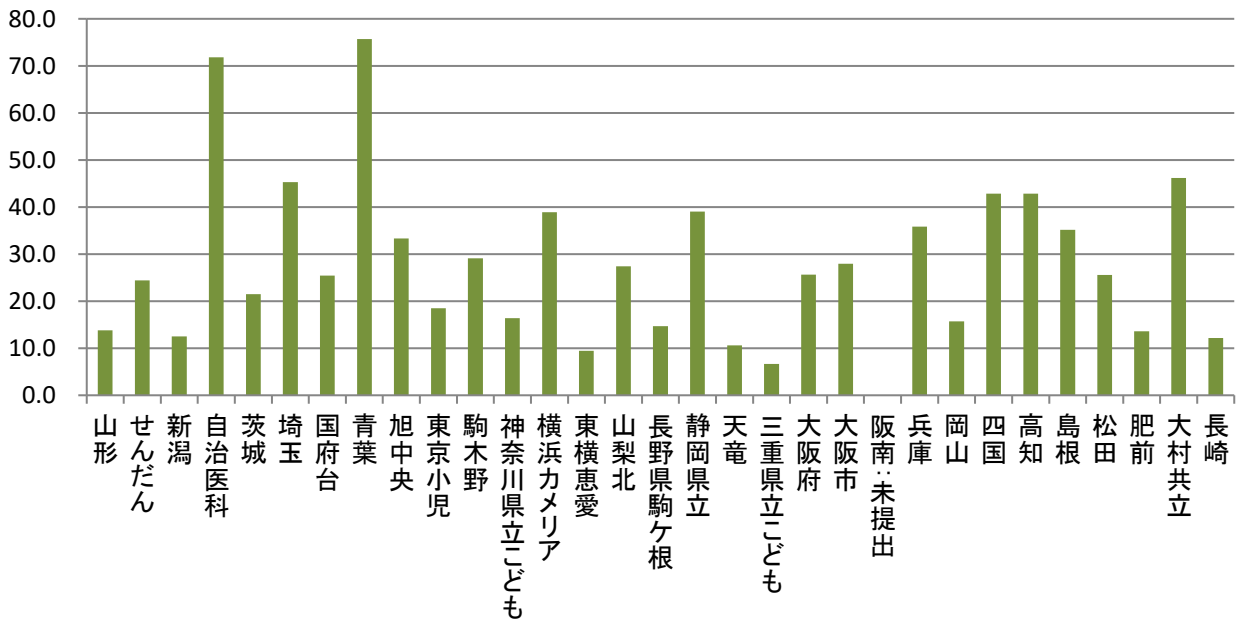
F44の割合 (%)



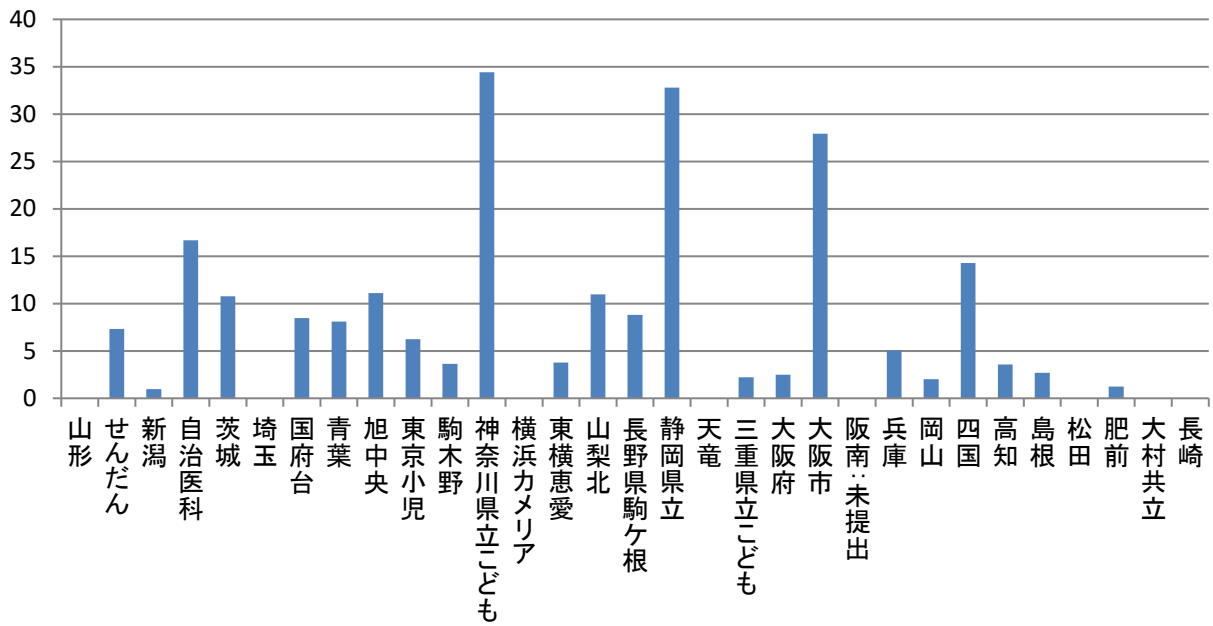
F45の割合(%)



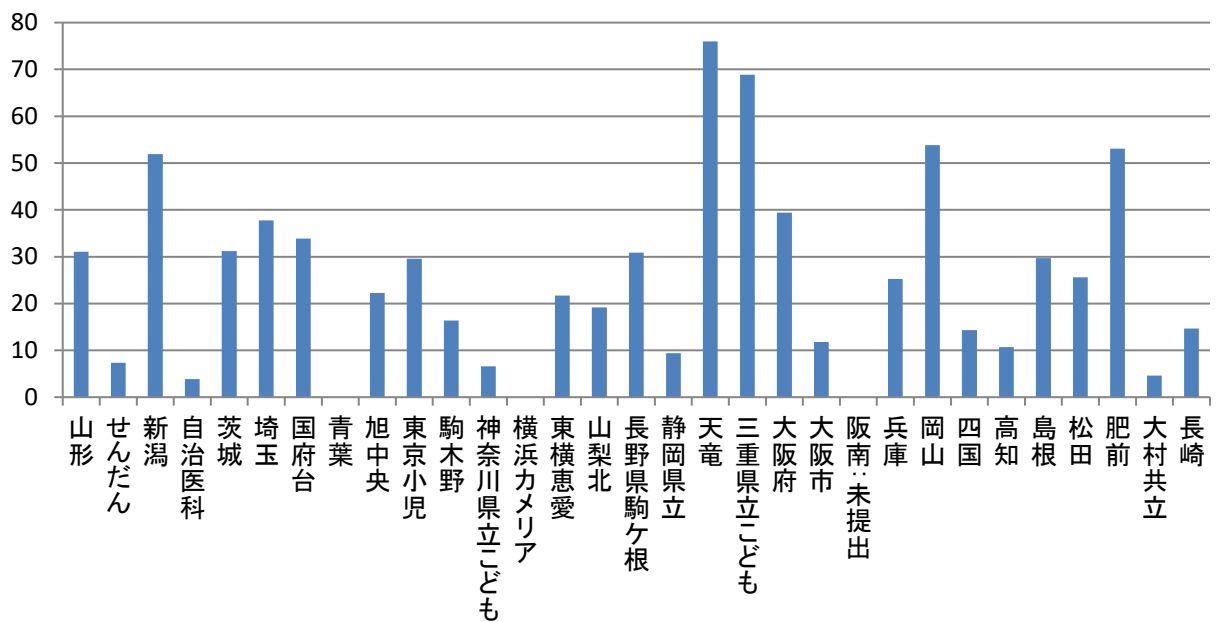
F4



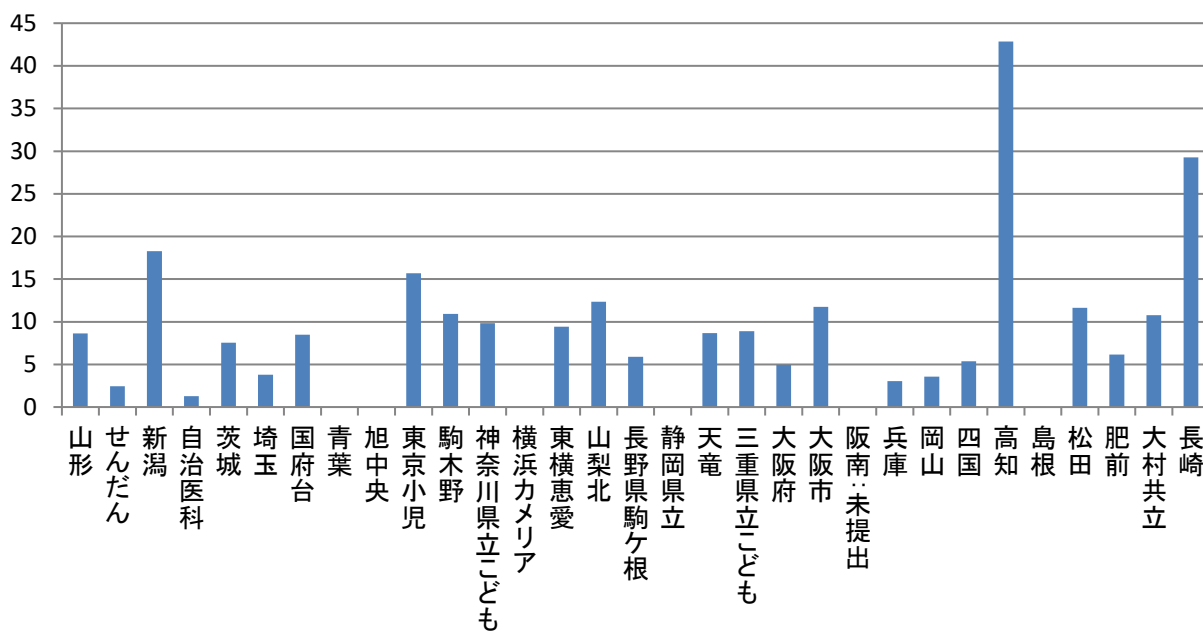
F50の割合 (%)



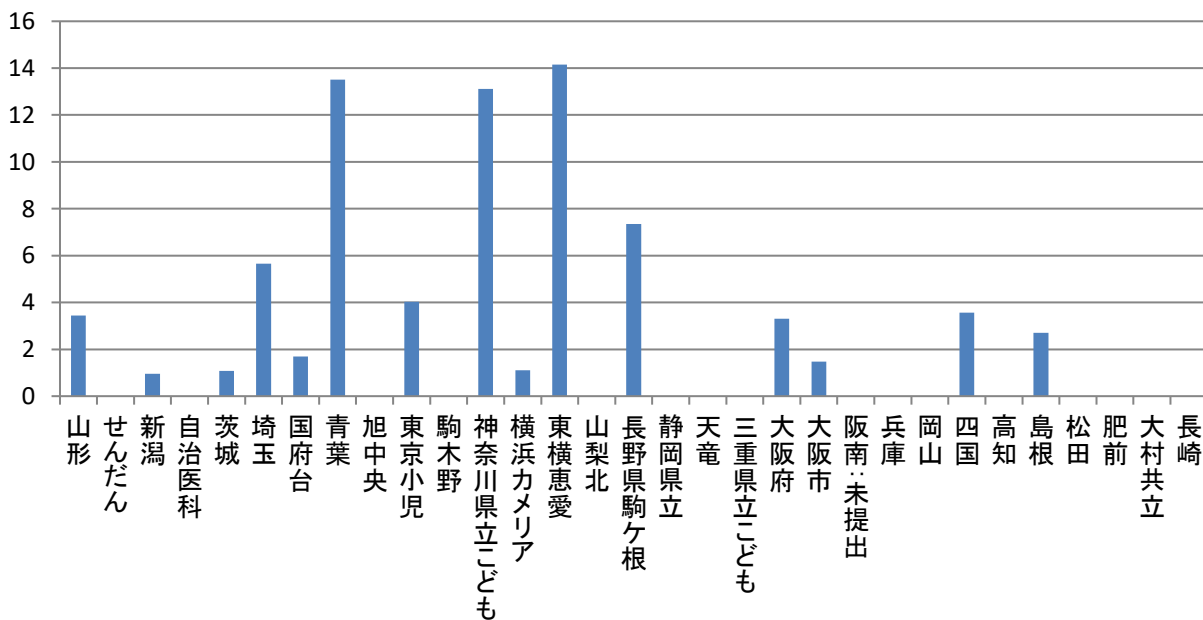
F84の割合 (%)



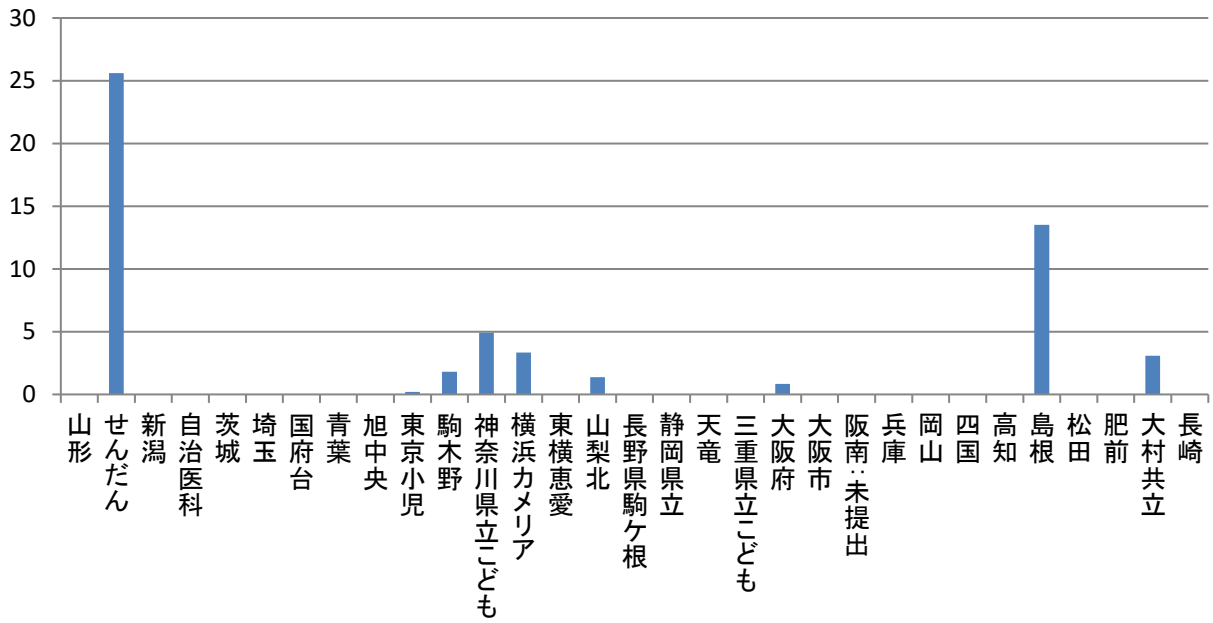
F90の割合 (%)



F91の割合 (%)



F93の割合 (%)



F95の割合 (%)

